

# Anti-Human DPF1, monoclonal (clone R1172.1.1A9)

**Recommended name:** Zinc finger protein neuro-d4; D4, zinc and double PHD fingers family 1  
**Alternative name(s):** BRG1-associated factor 45B; Short names: BAF45B

**Cat. No.** m15-076  
**Lot. No.** 20150720.LI

**Quantity:** 100 µg  
**Storage:** -20 °C



FOR RESEARCH USE ONLY

NOT FOR USE IN HUMANS

**DATASHEET Page 1 of 2**

## UniProt / NCBI Summary

### UniProt

Primary Accession # [Q92782](#)  
Secondary Accession # [Q08AJ0](#); [B3KSY8](#)

### NCBI

GI # [313104100](#)  
GenID [8193](#)  
Accession # [Q92782.2](#)  
GenBank Nucleotide # [n/a](#)

**Molecular Weight** 42,502 Da (380 aa)

DPF1: May have an important role in developing neurons by participating in regulation of cell survival, possibly as a neurospecific transcription factor. Belongs to the neuron-specific chromatin remodeling complex (nBAF complex). During neural development a switch from a stem/progenitor to a post-mitotic chromatin remodeling mechanism occurs as neurons exit the cell cycle and become committed to their adult state. The transition from proliferating neural stem/progenitor cells to post-mitotic neurons requires a switch in subunit composition of the npBAF and nBAF complexes. As neural progenitors exit mitosis and differentiate into neurons, npBAF complexes which contain ACTL6A/BAF53A and PHF10/BAF45A, are

*Continued on page 2.*

## Physical Characteristics

**Quantity:** 100 µg

**Concentration:** 1.0 mg/ml

**Host / Isotype:** mouse IgG2a

**Clonality:** monoclonal; ID R1172.1.1A9

**Immunogen:** recombinant protein corresponding to aa residues 230-380 of human DPF1

**Purification:** affinity-chromatography using Protein G

**Formulation:** 30% glycerol, 1x PBS, 0.02% sodium azide

**Specificity:** monospecific for human DPF1; see microarray analysis below

**Reactivity:** human

**Stability/Storage:** 12 months long term: -20 °C; short term: 4 °C; avoid freeze-thaw cycles; aliquot as required

**Handling Notes:** small volumes of antibody may occasionally become entrapped in the seal of the product vial during shipment and storage; if necessary, briefly centrifuge the vial on a tabletop centrifuge to dislodge any liquid in the container cap.

## Tested Research Applications

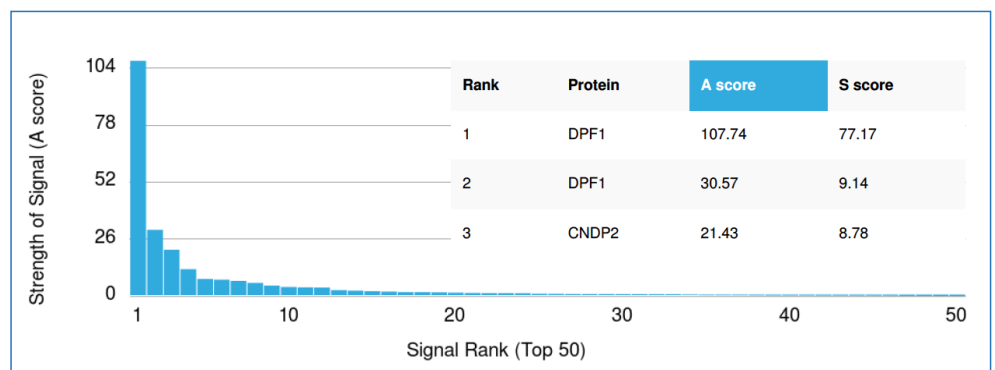
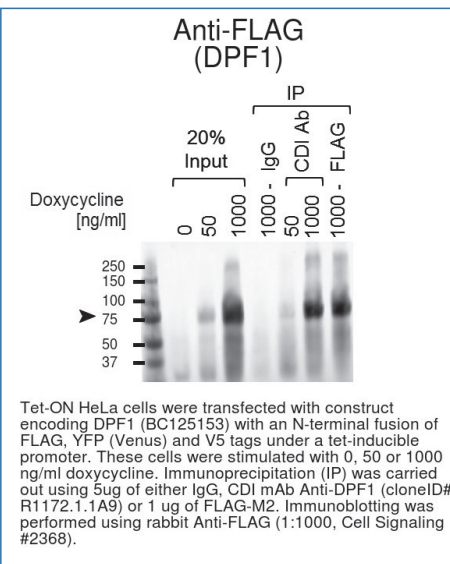
**Immunoprecipitation:** recommended; see below.

**Western Blot:** tested on cells transfected with a construct encoding DPF1; utility on native cells under evaluation

**ChIP-Seq:** recommended; see page 2

**Octet:** Recommended.

## Quality Assurance



**Specificity Analysis with HuProt™ Human Proteome Microarray:** Anti Human DPF1 (clone R1172.1.1A9) was analyzed using the CDI HuProt™ Human Proteome Microarray.

For more information on A/S scores and how they relate to specificity, see page 2.

# Anti-Human DPF1, monoclonal (clone R1172.1.1A9)

**Recommended name:** Zinc finger protein neuro-d4; D4, zinc and double PHD fingers family 1  
**Alternative name(s):** BRG1-associated factor 45B; Short names: BAF45B

**Cat. No.** m15-076  
**Lot. No.** 20150720.LI

**Quantity:** 100 µg  
**Storage:** -20°C



FOR RESEARCH USE ONLY

NOT FOR USE IN HUMANS

DATASHEET Page 2 of 2

## Uniprot / NCBI Summary

Continued from page 1.

exchanged for homologous alternative ACTL6B/BAF53B and DPF1/BAF45B or DPF3/BAF45C subunits in neuron-specific complexes (nBAF). The npBAF complex is essential for the self-renewal/proliferative capacity of the multipotent neural stem cells. The nBAF complex along with CREST plays a role regulating the activity of genes essential for dendrite growth. Belongs to the requiem/DPF family. 3 isoforms of the human protein are produced by alternative splicing.

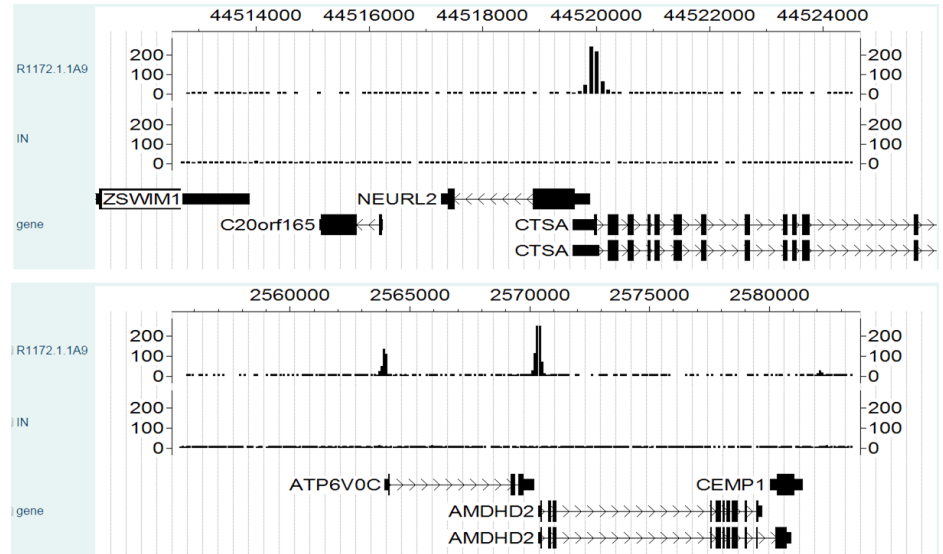
**Cellular Component:** cytoplasm; nucleus

### General Reference:

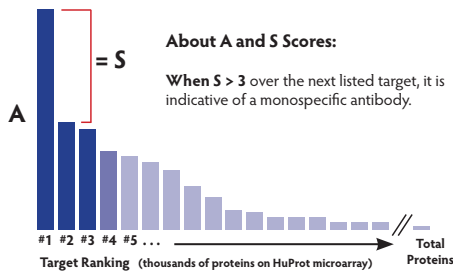
Ishizaka A, Mizutani T, Kobayashi K, Tando T, Sakurai K, Fujiwara T, Iba H (2012) Double plant homeodomain (PHD) finger proteins DPF3a and -3b are required as transcriptional co-activators in SWI/SNF complex-dependent activation of NF-κB RelA/p50 heterodimer. *J Biol Chem* 287:11924-33. [[PubMed](#)]

## Tested Research Applications

**ChIP-Seq:** Recommended



The ChIP was performed with chromatin from 10 million HCT116 cells and 3 µg of Anti-DPF1 (cloneID #R1172.1.1A9) antibody. The ChIP DNA was sequenced on an Illumina HiSeq platform and read counts were calculated at consecutive 100 bp bins across the human genome hg19. Normalized read-count levels for ChIP-seq of DPF1 (R1172.1.1A9) and control (IN) around the AMDHD2 and NEURL2 loci are displayed in the CisGenome browser.



**Statistical Analysis:** Thousands of GenePix data points (from the microarray) are analyzed in terms of signal strength and ranked accordingly.

**SUMMARY:** The A-score indicates the number of standard deviations above background seen for the mean signal bound by the target antigen. The S-score represents the difference between the A-score of the target antigen and the next best hit on the array. S-scores **greater than 3 standard deviations over the next listed target** are deemed statistically significant and indicate **highly specific antibodies**. More info at [cdi-lab.com/HighSpec.html](http://cdi-lab.com/HighSpec.html)

The development of this antibody was supported by the National Institutes of Health Protein Capture Reagent Program under award U54HG06434 to CDI Laboratories and Johns Hopkins University.

Guanajibo Research and Innovation Park  
4005 St B Road 114 Km 1.3  
Mayaguez, PR 00682

T 787.806-4100 Ext 233  
F 787.806-4006  
[www.cdi-lab.com](http://www.cdi-lab.com)

© CDI Laboratories 2016.  
For research use only. Not for use in humans or for diagnostics.  
Lot-specific Datasheet version tracker: v1.0.0

